



# Rosebud Name Tag

51 stitches wide x 51 stitches long

Supplies:

32 Count Antique Ivory Belfast Linen

DMC Floss in: 315, 316, 500 & 502

T H E  
DRAWN  
THREAD

**Directions:** Chart your name in the empty space in the center of the design using the alphabet provided. Find the center of your fabric and start your name tag there. Follow the color key above for colors and number of strands.

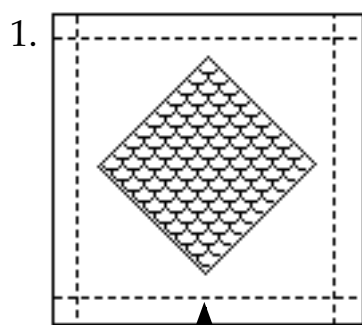
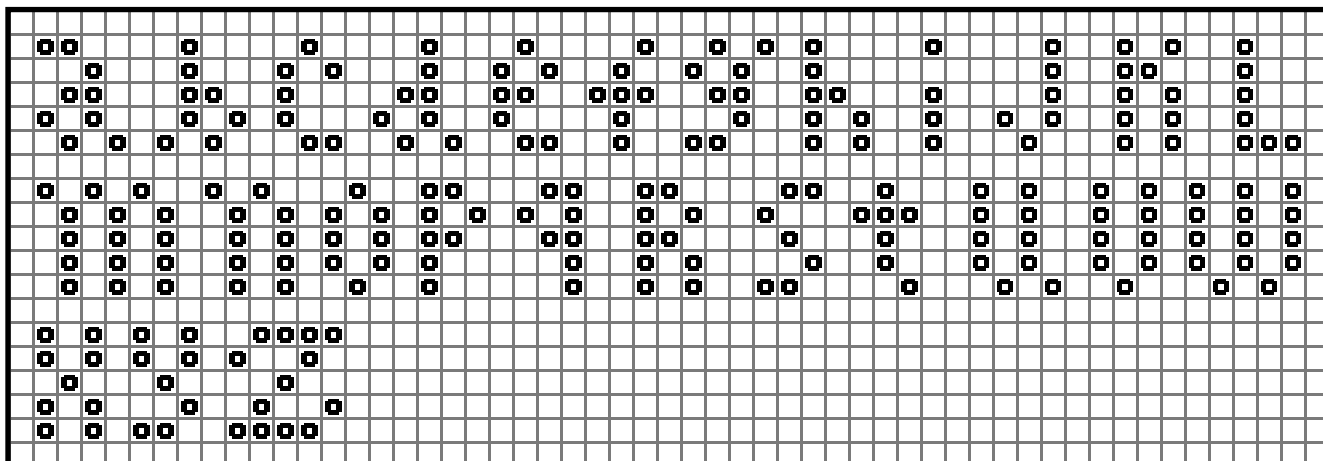
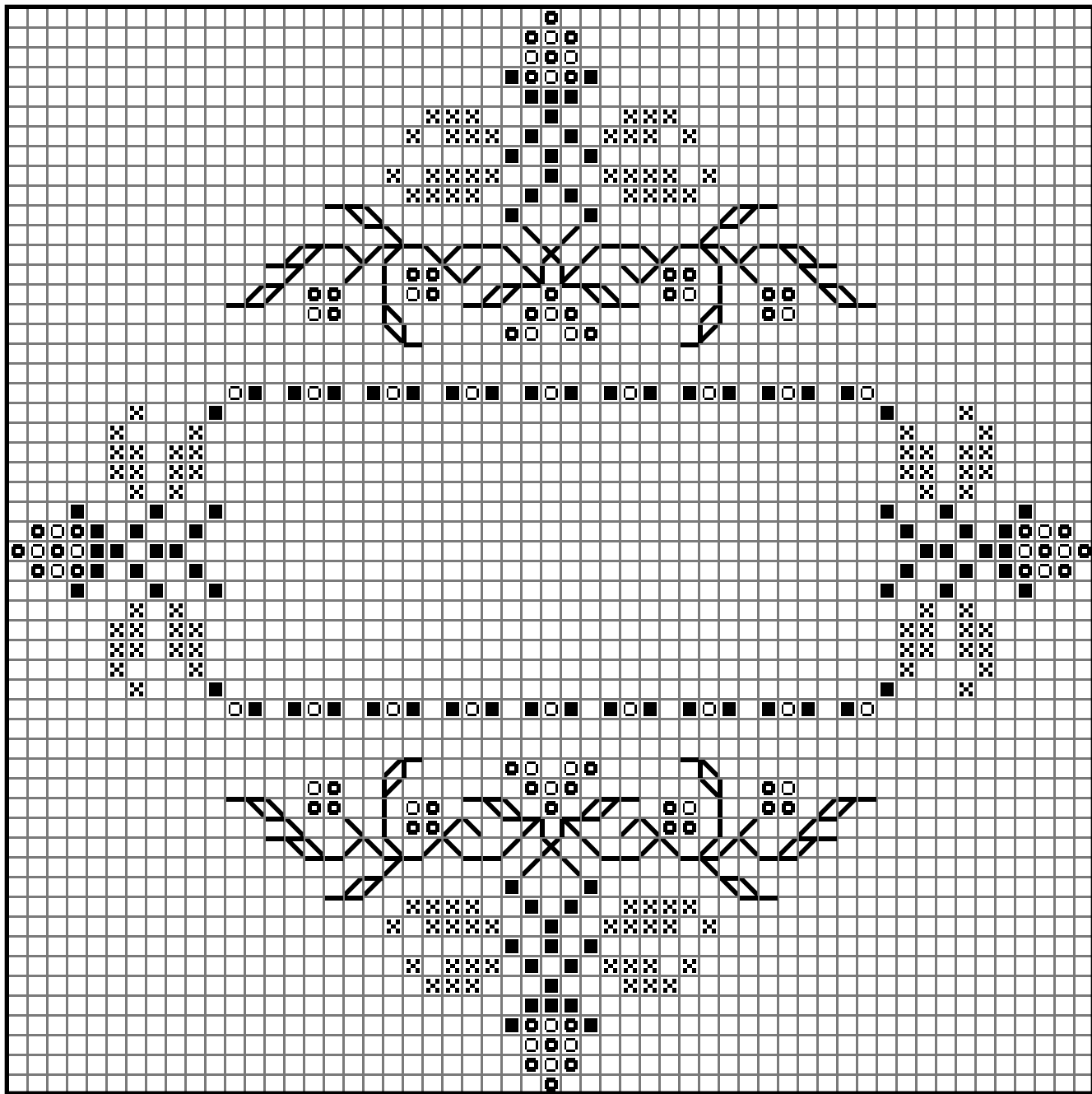
	Cross Stitch in 2 strands DMC 315
	Cross Stitch in 2 strands DMC 316
	Cross Stitch in 2 strands DMC 500
	Cross Stitch in 2 strands DMC 502
	Back Stitch in 1 strand DMC 500

**Finishing:** Count out 24 threads from each point of design area. Score and cut away excess fabric. (figure 1). Fold the piece in half horizontally (right sides together) and stitch across each side 8 threads in from the cut edge. (figure 2). Turn right side out. Fold under eight threads along unfinished edge (toward inside).

Cut a square of medium weight mounting board slightly smaller than the finished square (3"). Glue thin quilt batting to one side. Insert this square into the name tag (difficult, but not impossible. You'll have to work a bit to do this). Whip stitch the remaining open edges together. (figure 3).

Make a 36" twisted cord from DMC 315. Knot both ends. Stitch or glue around edges starting at bottom of tag, leaving about a 6" tail at each side of the bottom point. Tie tails in a bow.

Glue a 1" purchased pin back to the upper back side of the name tag. Enjoy!



Cut away excess fabric 24 threads from design area.

