



PEARLS & ROSEBUDS

BY THE DRAWN THREAD

SUPPLIES

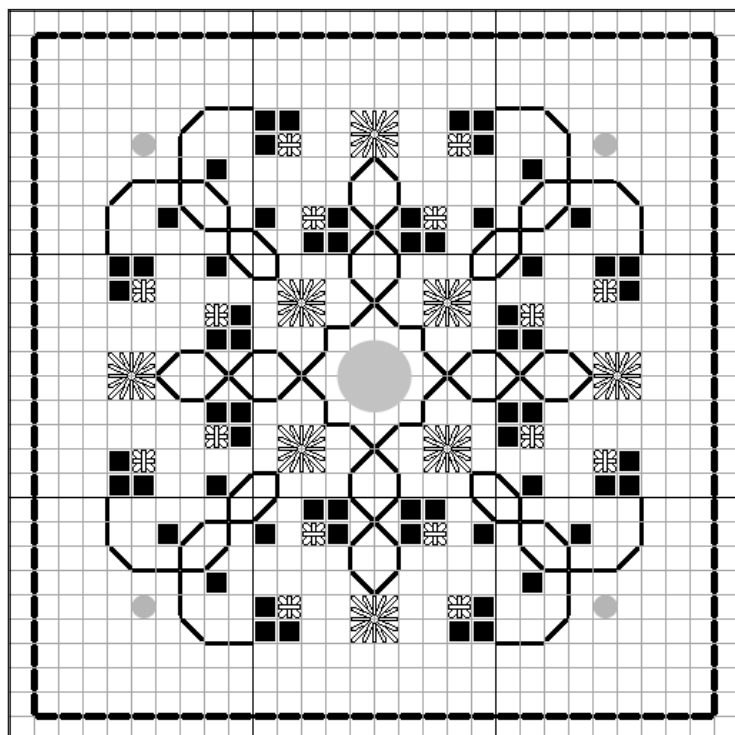
2 - 4" x 4" pieces
30 count "Crushed Strawberry" Legacy Linen

DMC Embroidery Floss in:
645 - Gray
647 - Light Gray Green
223 - Medium Rose
739 - Cream

2 mm Silk Ribbon

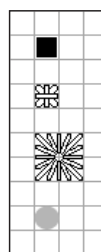
Two 6 mm Pearls

Four Pearl Seed Beads



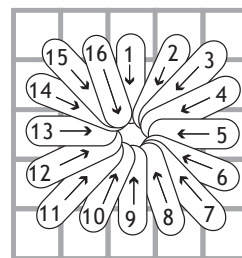
GENERAL DIRECTIONS

Center and stitch chart at left on one of the 4" pieces of linen. On the second piece of linen work just the back stitched border.

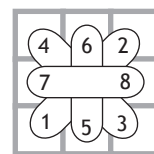


DMC 647 Cross Stitch in 1 ply
DMC 223 Smyrna Cross in 1 ply
DMC 739 Eyelet in 1 ply

Sew on Pearl Seed Bead using 1 ply 739
Back stitch all vines in 1 ply DMC 645
Back stitch border in 2 ply DMC 645



Eyelet



Smyrna Cross

FINISHING THE FOB:

Trim each piece leaving a 1/2" seam allowance all around. Fold the seam allowances under along the back stitched borders. Make a loop from the silk ribbon and line up the cut edges of the ribbon on the seam allowance on the top of one of the pieces and tack into place (see illustration at right). Place the wrong sides of the two pieces together, lining up the back stitching and whip stitch the back stitching on each piece together using 1 ply DMC 645. You will be taking the needle and thread under each back stitch once, first through one back stitch on the front, then through one on the back, all around the fob. Just stitch through the ribbon pieces when you come to them. Before you finish stitching the last side closed, cut several layers of batting slightly smaller than the size of the fob and insert into fob. Use as many layers as you need until it is firmly stuffed. Then finish whip stitching the fob closed.

Using 2 ply of DMC 739, bring needle up from the back center of the fob to the front center leaving a 4 - 6" tail hanging on the back. Thread one of the 6mm pearls on the needle and take it back down to the back of the piece. Take the thread through the other pearl and un-thread the needle. Knot the two loose ends of the thread together pulling very tightly to "tuft" the fob. Knot again to secure.

