



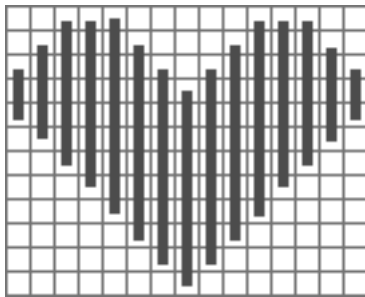
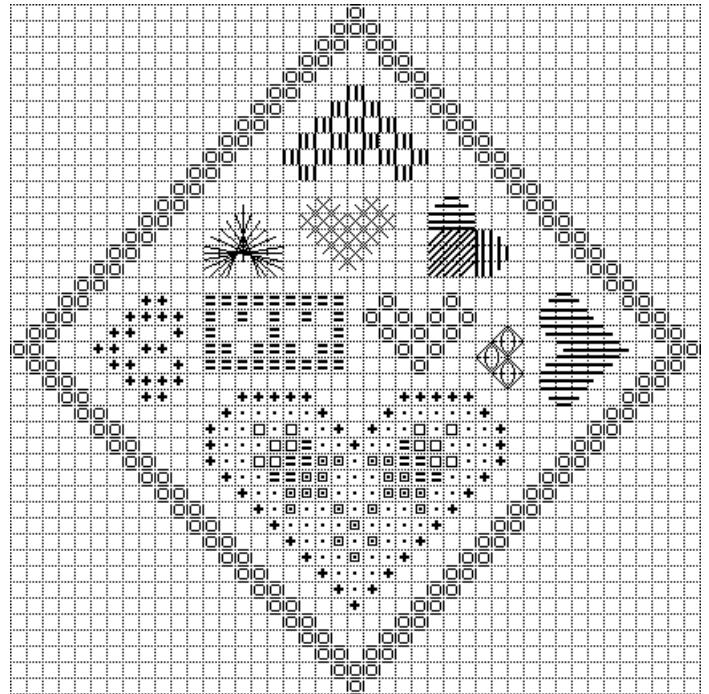
HEART THROB

Supplies:

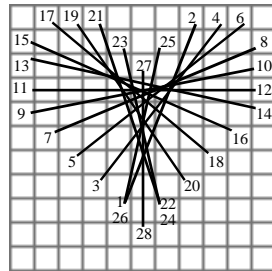
32 count "Cameo Rose" Belfast Linen
 Needlepoint Silk or DMC Floss in: 223 - Dark Rose
 143 - Dark Rose 225 - Light Rose
 141 - Light Rose 543 - Cream
 704 - Cream 3041 - Dark Mauve
 932 - Dark Mauve 3042 - Light Mauve
 884 - Light Mauve 927 - Pale Green
 641 - Pale Green 224 - Medium Rose
 711 - Medium Rose

Finishing:

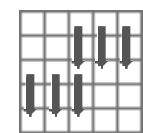
Count out 18 threads from each point of design area. Score and then cut away excess fabric. Fold the fob in half horizontally (right sides together) and stitch across each side 8 threads in from edge. Turn right side out. Fold under 8 threads along unfinished edge (toward inside of fob). Make twisted cord from floss. Fold in half and knot at loose ends. Insert knotted end into opening of keep and begin to blind stitch opening together. Leave a small area unstitched at the bottom of the fob. Fill with emery grains, batting or rice. After filling, finish blind stitching the opening together. Loop cord through scissors.



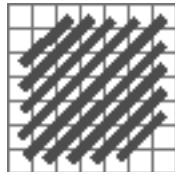
Satin Stitch Heart



Rhodes Heart

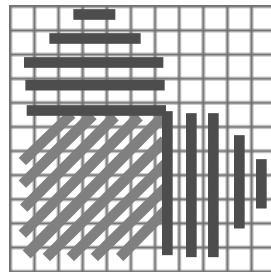


Diagonal Short Satin Stitch



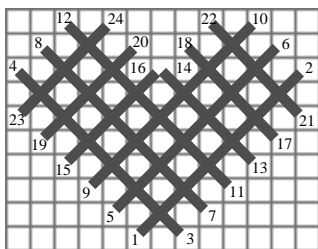
Cushion Stitch Heart

Step 1

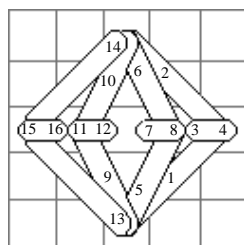


Cushion Stitch Heart

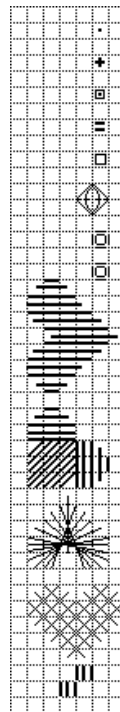
Step 2



Sprats Head Heart

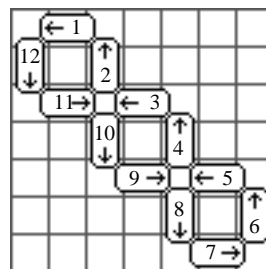


Queen Stitch

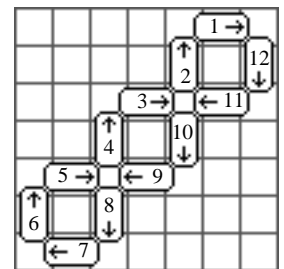


- cross stitch in 1 strand Cream
- + cross stitch in 1 strand Dark Rose
- cross stitch in 1 strand Pale Green
- ▬ cross stitch in 1 strand Dark Mauve
- ▮ cross stitch in 1 strand Light Mauve
- ◇ queen stitch in 1 strand Dark Mauve
- ♥ double faggoting stitch heart in 1 strand Light Rose
- ▭ double faggoting stitch border in 1 strand Cream
- ~ satin stitch heart in 2 strands Medium Rose
- ▨ cushion stitch heart in 2 Dark Rose
- ★ Rhodes heart in 1 strand Light Mauve
- ⬠ Sprats Head heart in 1 strand Medium Rose
- ▤ diagonal short satin in 2 strands Dark Mauve

Work each leg twice in numerical order



Double Faggoting Left to Right



Double Faggoting Right to Left