

CORRECTION PAGES FOR

TOCCATA

N U M B E R F O U R

ENTIRE SAMPLER: 214 STITCHES WIDE X 286 STITCHES LONG

EACH BAND: 70 STITCHES WIDE X 286 STITCHES LONG

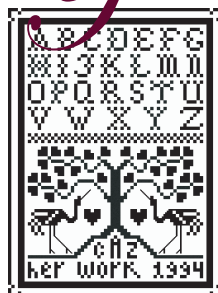
SUPPLIES

32 Count "Vintage Country Mocha" Belfast Linen cut to 20" X 24"

Soie d'Alger Au Ver A Soie Silk in:	or	Needlepoint, Inc. Silk in:
3716 - Dark Green		296 - Dark Green
3714 - Light Green		292 - Light Green
4626 - Dark Burgundy		715 - Dark Burgundy
4644 - Medium Burgundy		712 - Medium Burgundy
4632 - Light Burgundy		450 - Light Burgundy
3815 - Antique Gold		696 - Antique Gold
1736 - Dark Blue		325 - Dark Blue
1814 - Light Blue		321 - Light Blue
3711 - Cream		992 - Light Cream
Waterlilies Silk 157		Gloriana Silk 138
Polar Ice		Arctic Ice

Soie d'Alger 100/3 in 080 - Dark Cream

BY THE
DRAWNTHREAD



4421 Quitman Street

Denver, CO 80212

970 . 819 . 8339

www.drawnthread.com

drawnthread@mac.com

COLOR KEY FOR ALL PARTS/BANDS

	Au Ver A Soie 3716	or	Needlepoint Silk 296	Dark Green	Cross Stitch	1 ply
	Au Ver A Soie 3714	or	Needlepoint Silk 292	Light Green	Cross Stitch	1 ply
	Au Ver A Soie 4626	or	Needlepoint Silk 715	Dark Burgundy	Cross Stitch	1 ply
	Au Ver A Soie 4644	or	Needlepoint Silk 712	Medium Burgundy	Cross Stitch	1 ply
	Au Ver A Soie 4632	or	Needlepoint Silk 450	Light Burgundy	Cross Stitch	1 ply
	Au Ver A Soie 3815	or	Needlepoint Silk 696	Antique Gold	Cross Stitch	1 ply
	Au Ver A Soie 1736	or	Needlepoint Silk 325	Dark Blue	Cross Stitch	1 ply
	Au Ver A Soie 1814	or	Needlepoint Silk 321	Light Blue	Cross Stitch	1 ply
	Waterlilies Silk 157	or	Gloriana Silk 138	Polar Ice or Artic Ice	Cross Stitch	1 ply
	Au Ver A Soie 3711	or	Needlepoint Silk 992	Cream	Cross Stitch	2 ply
	Au Ver A Soie 3711	or	Needlepoint Silk 992	Cream	Half Cross	1 ply
	Au Ver A Soie 3711	or	Needlepoint Silk 992	Cream	Back Stitch	1 ply

BAND 10 - DOUBLE PULLED FOUR SIDED STITCH

Using 1 strand Soie d'Alger 100/3 in 080, Dark Cream starting at the top right of the design area work legs 1 - 15 (each pair of legs. i.e. legs 1-4, share the same space). Then repeat legs 5 - 15 across the band. Work another three rows of Pulled Four Sided Stitch. Note that the top horizontal legs of the row being stitched will share space with the bottom horizontal legs of the row above it.

BAND 11 - ALPHABET, PART I

Using 1 ply Caron Waterlilies 157, Polar Ice, cross stitch the first part of the alphabet where shown on the master chart.

BAND 12 - MODIFIED ITALIAN CROSS STITCH

Using 2 ply Soie d'Alger 3711, Cream work a Modified Italian Cross Stitch (legs 1 - 6) and repeat these legs across the width of the design area following stitch diagram. Then work another three rows directly below the first.

BAND 13 - PERSONALIZATION

Using the alphabet and numerals provided, chart your personalization line and cross stitch in 1 ply Waterlilies 157, Polar Ice.

BAND 25 - WEB STITCH

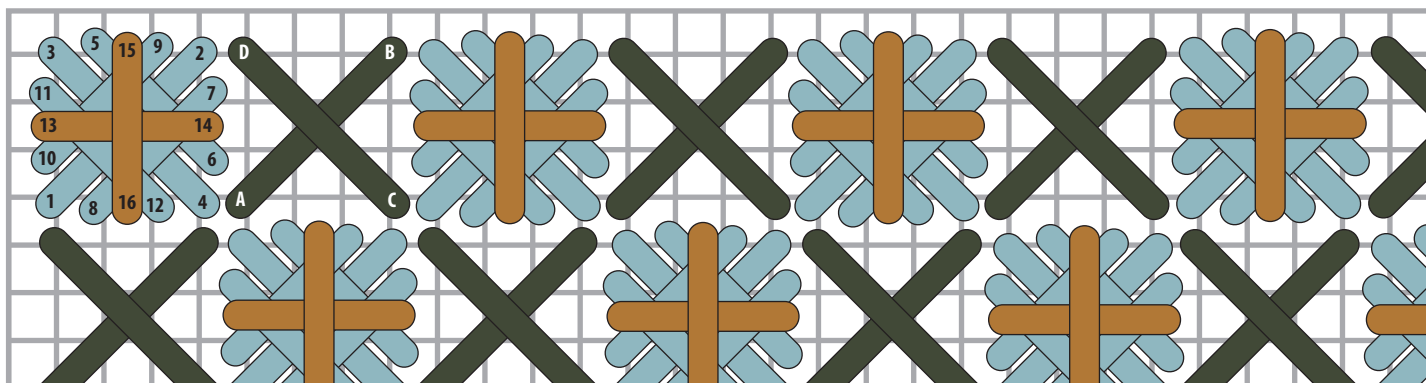
Following stitch diagram, using 2 ply Soie d'Alger 3711, Cream, beginning in the upper left corner of the band, work legs 1 - 18 of the Web Stitch band then continue in this manner until entire band is filled.

BAND 26 - ALPHABET, PART 2

Using 1 ply Waterlilies Silk 157, Polar Ice, cross stitch the first part of the alphabet where shown on the master chart.

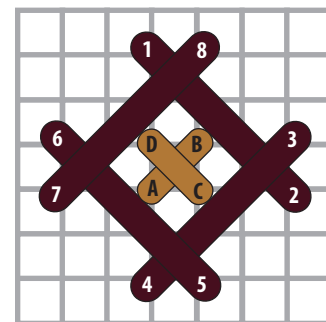
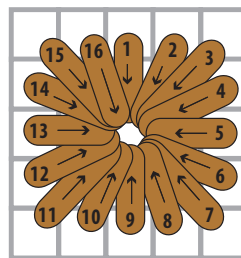
BAND 28 - CROSS & TRIPLE CROSS

Following stitch diagram below and master chart for placement, first work all Cross Stitches using 1 ply Dark Green (legs A - D). Then make the Triple Crosses using 1 ply Light Blue (legs 1 - 12). Finally cross all Triple Crosses with an Upright Cross in 1 ply Antique Gold (legs 13 - 16).



BAND 30 - CROSS STITCH, EYELETS AND BROAD DIAGONAL CROSS

Following master chart on page 3 and color key on page 1, work all cross stitch areas. Then work Eyelets and Broad Diagonal Crosses where indicated in 1 ply Antique Gold and Dark Burgundy as shown in diagrams at right.



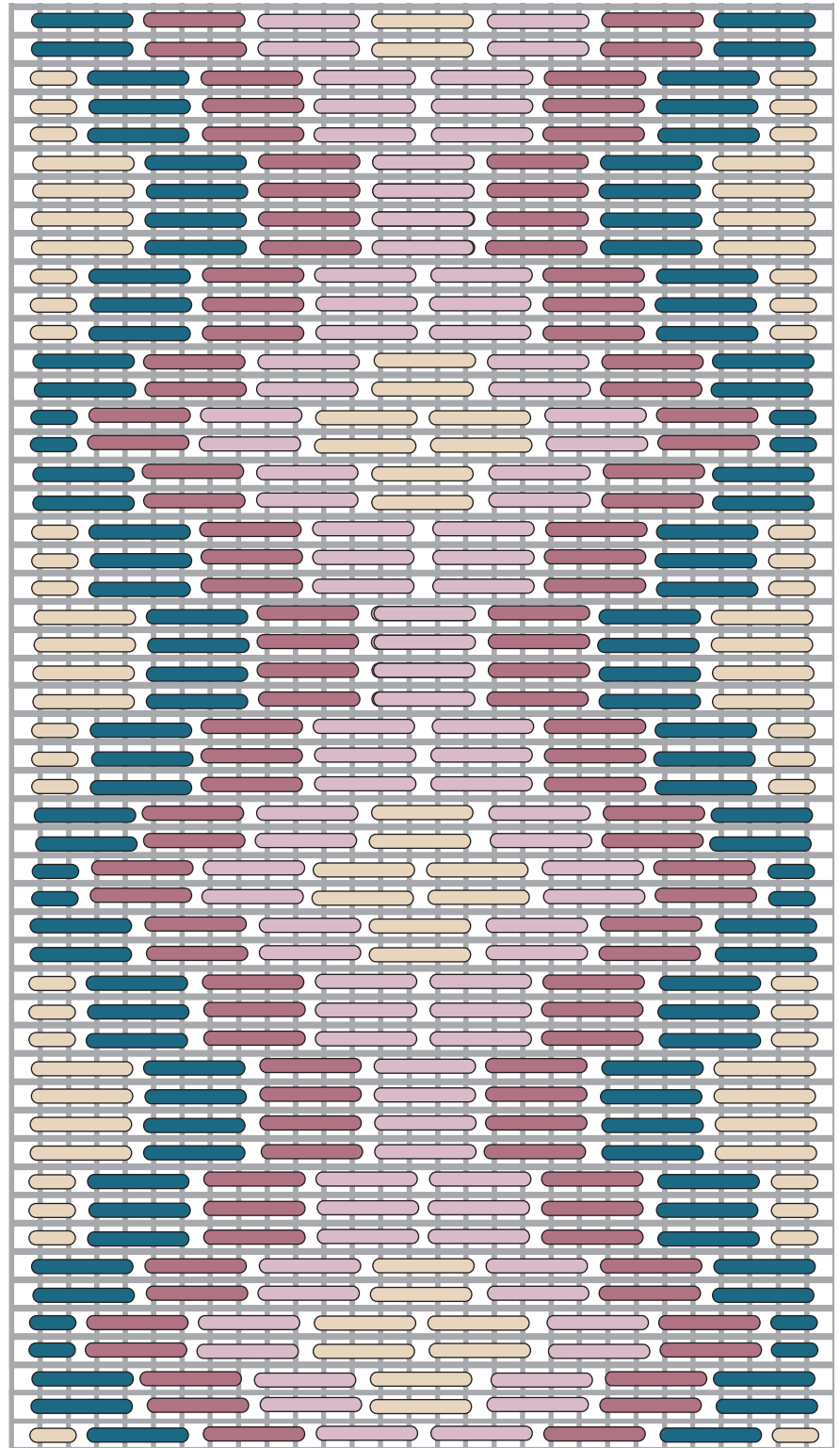
BAND 31 - CROSS STITCH & BACK STITCH

Following master chart, cross stitch the two horizontal borders in 1 ply Dark Green Then back stitch vines and leaves and flowers in 1 ply Dark Green. Back stitch Burgundy flowers and pomegranate seeds in 1 ply Dark Burgundy

BAND 36 - FLORENTINE PATTERN

Begin this Florentine Pattern in the lower right corner of the band and the stitch diagram below. Work from right to left and repeat the block across the design area. Each leg is worked from left to right using 2 ply of floss. Each leg covers four linen threads except for the compensating stitches at the sides of the band which cover two linen threads.

-  2 ply Cream
-  2 ply Dark Blue
-  2 ply Medium Burgundy
-  2 ply Light Burgundy



BAND 39 - ALPHABET AND NUMERALS

Using 1 ply Waterlilies Silk 157, Polar Ice, cross stitch the first part of the alphabet where shown on the master chart.

BAND 40 - BOUCLE STITCH

Using 2 ply 3711, Cream make a block of Boucle stitches following stitch diagram below (legs 1 - 32). Fill the entire band with blocks made in this manner.

TOCCATA FOUR - PART III - RIGHT VERTICAL BAND - CHART THREE



TOCCATA FOUR - PART III - RIGHT VERTICAL BAND - CHART FOUR

